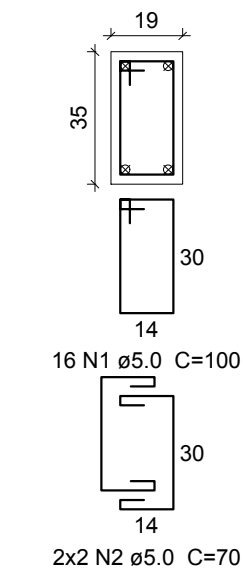
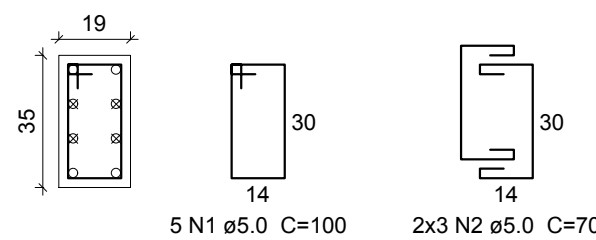


P19

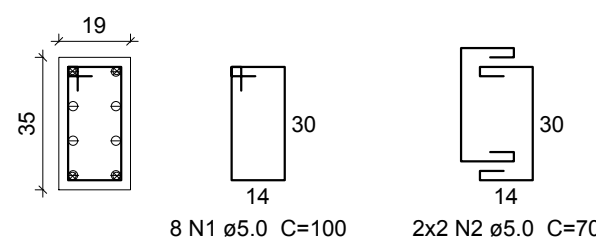
VIGA FINAL - L5
ESC 1:20



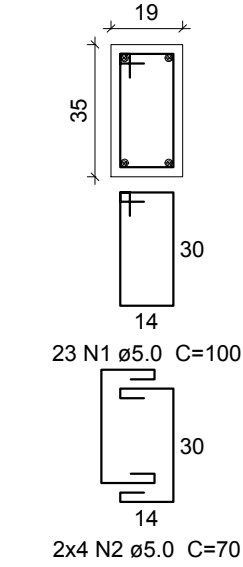
RESERVATÓRIO - L4
ESC 1:20



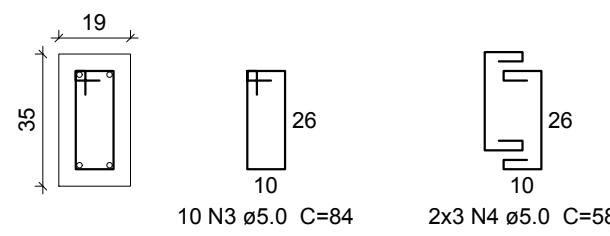
COBERTURA - L3
ESC 1:20



NÍVEL LAJE - L2
ESC 1:20

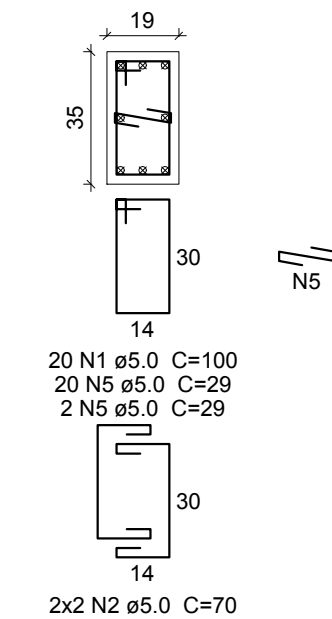


FUNDAÇÕES - L1
ESC 1:20

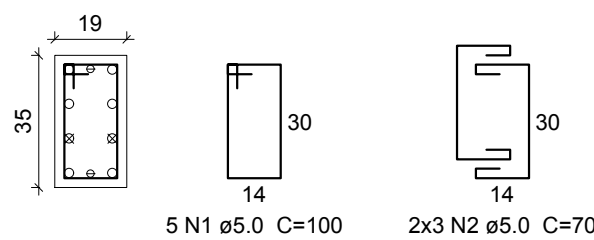


P20

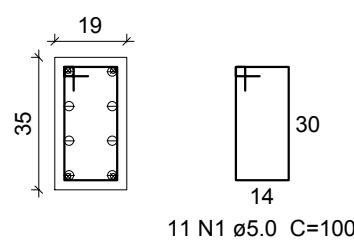
VIGA FINAL - L5
ESC 1:20



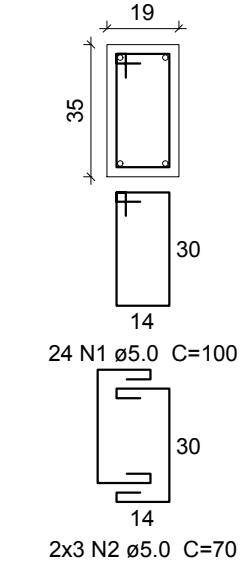
RESERVATÓRIO - L4
ESC 1:20



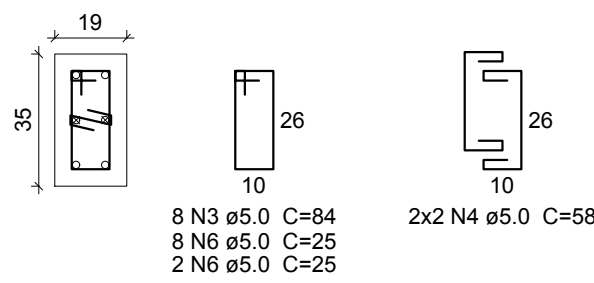
COBERTURA - L3
ESC 1:20



NÍVEL LAJE - L2
ESC 1:20

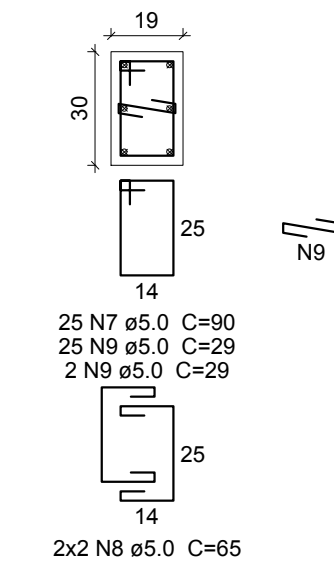


FUNDAÇÕES - L1
ESC 1:20

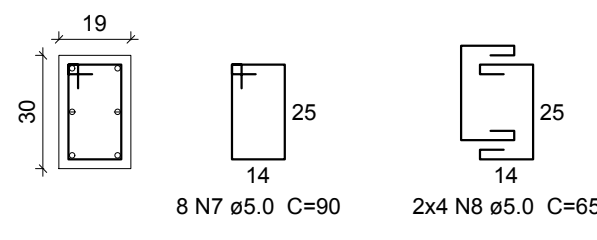


P21

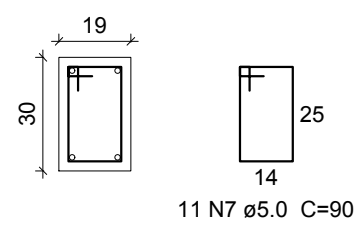
VIGA FINAL - L5
ESC 1:20



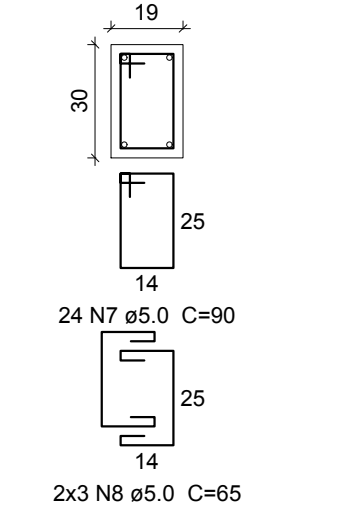
RESERVATÓRIO - L4
ESC 1:20



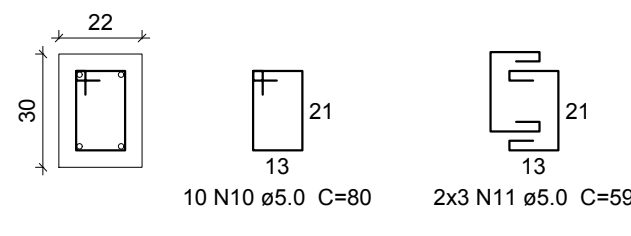
COBERTURA - L3
ESC 1:20



NÍVEL LAJE - L2
ESC 1:20



FUNDAÇÕES - L1
ESC 1:20



Relação do aço

AÇO	N	DIAM (mm)	QUANT	C.UNIT (cm)	C.TOTAL (cm)
CA60	1	5.0	112	100	11200
	2	5.0	38	70	2660
	3	5.0	18	84	1512
	4	5.0	10	58	580
	5	5.0	22	29	638
	6	5.0	10	25	250
	7	5.0	68	90	6120
	8	5.0	18	65	1170
	9	5.0	27	29	783
	10	5.0	10	80	800
	11	5.0	6	59	354
CA50	12	10.0	4	314	1256
	13	10.0	8	192	1536
	14	10.0	4	127	508
	15	10.0	8	355	2840
	16	10.0	6	312	1872
	17	10.0	2	75	150
	18	10.0	4	173	692
	19	10.0	4	168	672
	20	12.5	4	127	508
	21	12.5	6	94	564
	22	12.5	8	312	2496
	23	12.5	2	158	316
	24	12.5	4	210	840
	25	16.0	4	312	1248
	26	16.0	6	132	792
	27	16.0	10	195	1950
	28	16.0	16	121	1936

Resumo do aço

AÇO	DIAM (mm)	C.TOTAL (m)	PESO + 10 % (kg)
CA50	10.0	95.3	64.6
	12.5	47.3	50.1
	16.0	59.3	102.9
CA60	5.0	260.7	44.2
PESO TOTAL (kg)			
CA50	217.5		
CA60	44.2		

Volume de concreto (C-25) = 1.99 m³
Área de forma = 32.75 m²



PRÓ-REITORIA DE ADMINISTRAÇÃO
COORDENAÇÃO DE ENGENHARIA E ARQUITETURA
Rua Esmeralda, 430 - Feixa Nova - Camobi - CEP 97110-767 - Santa Maria - Rio Grande do Sul.
Telefone: (55) 3226-6630

OBRA: SALAS DE AULA E SANITÁRIOS/VESTIÁRIOS

LOCAL: IF FARROUPILHA - CAMPUS SANTO ÂNGELO

PROJETO: ESTRUTURAL PRÉDIO SANITÁRIOS

ÁREA: 662,73 m²

CONTEÚDO: PILARES 05

ESCALA: 1/50

PROPRIETÁRIO:

INSTITUTO FEDERAL FARROUPILHA

DATA: Março/2017

DESENHO: Cristina

RESPONSÁVEL:

ENG. CIVIL CRISTINA SILVA FELTRIM

PRANCHA: DET EST 14/19